

Obsidian

ANDOVER FABRICS

a
100
years



After Midnight Quilt designed by: **Janet Houts**

Quilt Size: **72" x 80"** • Skill Level: **Intermediate / Advanced**

andover

•
•
• makower.uk
•

Free Pattern Download Available

1384 Broadway New York, NY 10018
Tel. (800) 223-5678 • andoverfabrics.com

12/15/21

After Midnight Quilt

Introducing Andover Fabrics new collection: **OBSIDIAN** by Andover Fabrics

Quilt designed by Janet Houts



Quilt finishes 72" x 80"
16 Blocks: 18" x 20"

Who doesn't like Log Cabin blocks? This original block has a surprise—it is not a square, and the overall design is asymmetrical. Some of the patches can be easily made with the use of strip piecing. Careful attention to patch placement results in a dynamic and successful double-bed comforter.

Cutting Directions

Note: Read assembly directions before cutting patches. All measurements are cut sizes and include 1/4" seam allowances. A fat 1/4 is an 18" x 20"-22" cut. WOF designates the width of fabric from selvedge to selvedge (approximately 43" wide).

4 Background Blacks (Block Y) From each:

- Cut (8) strips 2 1/2" x 10 1/2"
- Cut (8) strips 2 1/2" x 8 1/2"
- Cut (8) strips 2 1/2" x 6 1/2"
- Cut (8) strips 2 1/2" x 4 1/2"
- Cut (8) strips 2 1/2" x 1 1/2"

4 Background Blacks (Block Z) From each:

- Cut (16) strips 2 1/2" x 9 1/2"
- Cut (8) strips 2 1/2" x 7 1/2"
- Cut (8) strips 2 1/2" x 5 1/2"
- Cut (8) strips 1 1/2" x 3 1/2"
- Cut (8) squares 1 1/2" x 1 1/2"

8 Brights From each:

- Cut (8) strips 1 1/2" x 21 1/2" for strip-pieced bands
- Cut (8) squares 2 1/2" x 2 1/2"

8 Log Cabin Blacks From each:

- Cut (8) strips 1 1/2" x 21" for strip-pieced bands

Binding

- Cut (8) strips 2 1/2" x WOF for binding

Backing

- Cut (2) lengths 40" x 88", pieced to fit quilt top with overlap on all sides

Fabric Requirements

	Yardage
4 Background Blacks	3/4 yard each (Block Y)
307-K 312-K	317-K 320-K
4 Background Blacks	3/4 yard each (Block Z)
308-K 309-K	310-K 311-K
8 Brights	fat 1/4 each
CS-10-BarnRose CS-10-ButternutSquash	
CS-10-Champagne CS-10-Clay CS-10-Faded	
CS-10-Isle CS-10-Oatmeal CS-10-Sage	
8 Log Cabin Blacks	fat 1/4 each
314-K 316-K	321-K 322-K (Block Y)
313-K 315-K	318-K 319-K (Block Z)
Binding	3/4 yard 313-K
Backing	5 yards 312-K

Making the Quilt

Feel free to mix up the various L. C. Blacks and the Brights as you wish to make the blocks. However, if you wish to make the quilt as shown, follow these directions carefully.

- Some of the patches in the blocks are made with strip-piecing techniques. Pair the following 1 1/2" x 21" strips for strip-pieced bands:

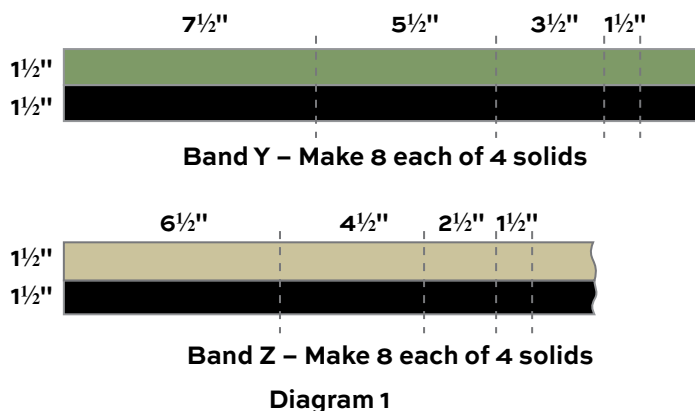
For Block Y:

Champagne/321-K; Faded/322-K; Isle/314-K; Sage/316-K

For Block Z:

BarnRose/318-K; ButternutSquash/315-K; Clay/313-K; Oatmeal/319-K

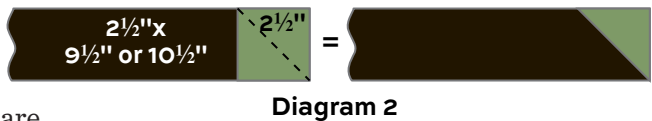
Join the 2 strips lengthwise, and press the seam allowance toward the dark print to make a pieced band (Diagram 1). Make 8 bands of each color combination. Press the seam allowances toward the black strips.



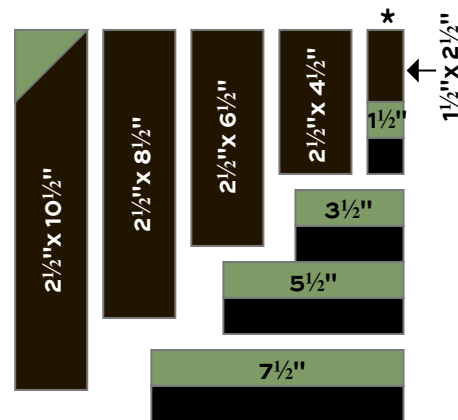
After Midnight Quilt



2. From the bands, cut crosswise segments the widths shown on the Band Y and Band Z diagrams. Be sure to cut the segments perpendicular to the pieced seam so each segment is a rectangle with square ends. Adjust your cutting as needed. You should have 8 of each color and length. Set these aside, keeping like segments together.

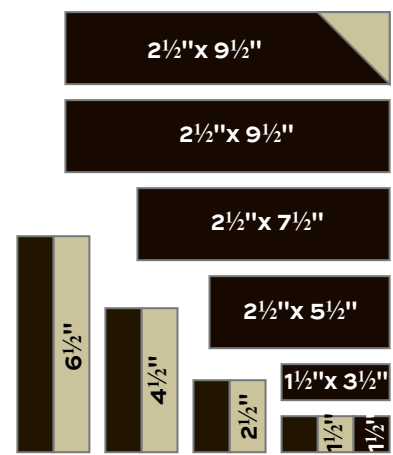


3. The longest strip in each block has a triangle stitched to one end. Draw a diagonal line on the wrong side of each Bright 2 1/2" square. Place a marked square with right sides together on the end of a 10 1/2" Black strip, pairing the colors as listed for Block Y in Step 1. Stitch on the drawn line in the direction shown in Diagram 2. Repeat this step for all the Block Y color combinations. Likewise, stitch the appropriate Bright square to the ends of 9 1/2" Black strips for Block Z. (See Step 1.)



Block Y – Make 8 each of 4 solids
*Begin “Log Cabin” piecing in corner

4. Referring to the Block Y and Block Z diagrams, arrange the Black Background strips and the strip-pieced segments from Step 2 as shown. Be careful to correctly rotate the black strip with the triangle. Beginning in the corner with the smallest patch, join the segments in order. Make 8 Block Y and 8 Block Z in each combination.



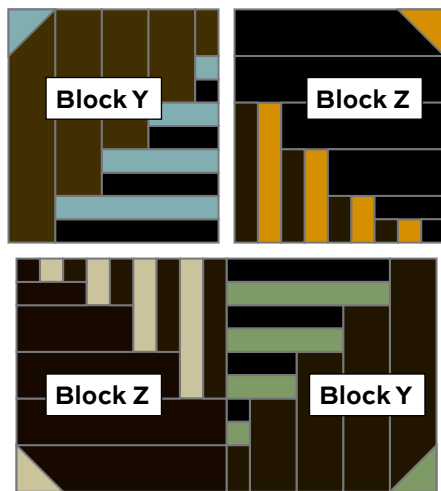
Block Z – Make 8 each of 4 solids

5. Arrange 2 Y blocks and 2 Z blocks as shown in the Big Block 1 and Big Block 2 diagrams, rotating the Bright strips as shown. Note that the colored triangles are in the 4 corners of the block. Join the blocks to make 8 of each big block.

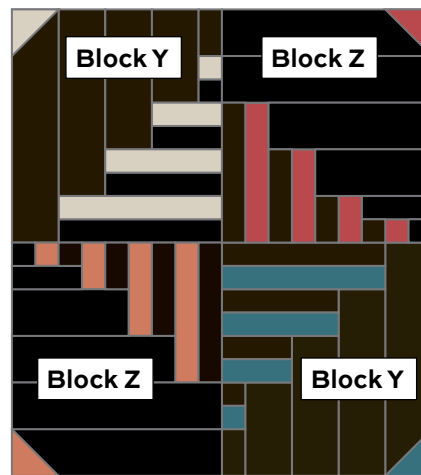
6. Refer to the Quilt Diagram. Position the blocks as shown, alternating Block 1 and Block 2. Looking through a camera or the wrong end of binoculars may help you find mistakes. Once you are satisfied with the arrangement, join 4 blocks in each of 4 rows, and then join the rows.

Finishing the Quilt

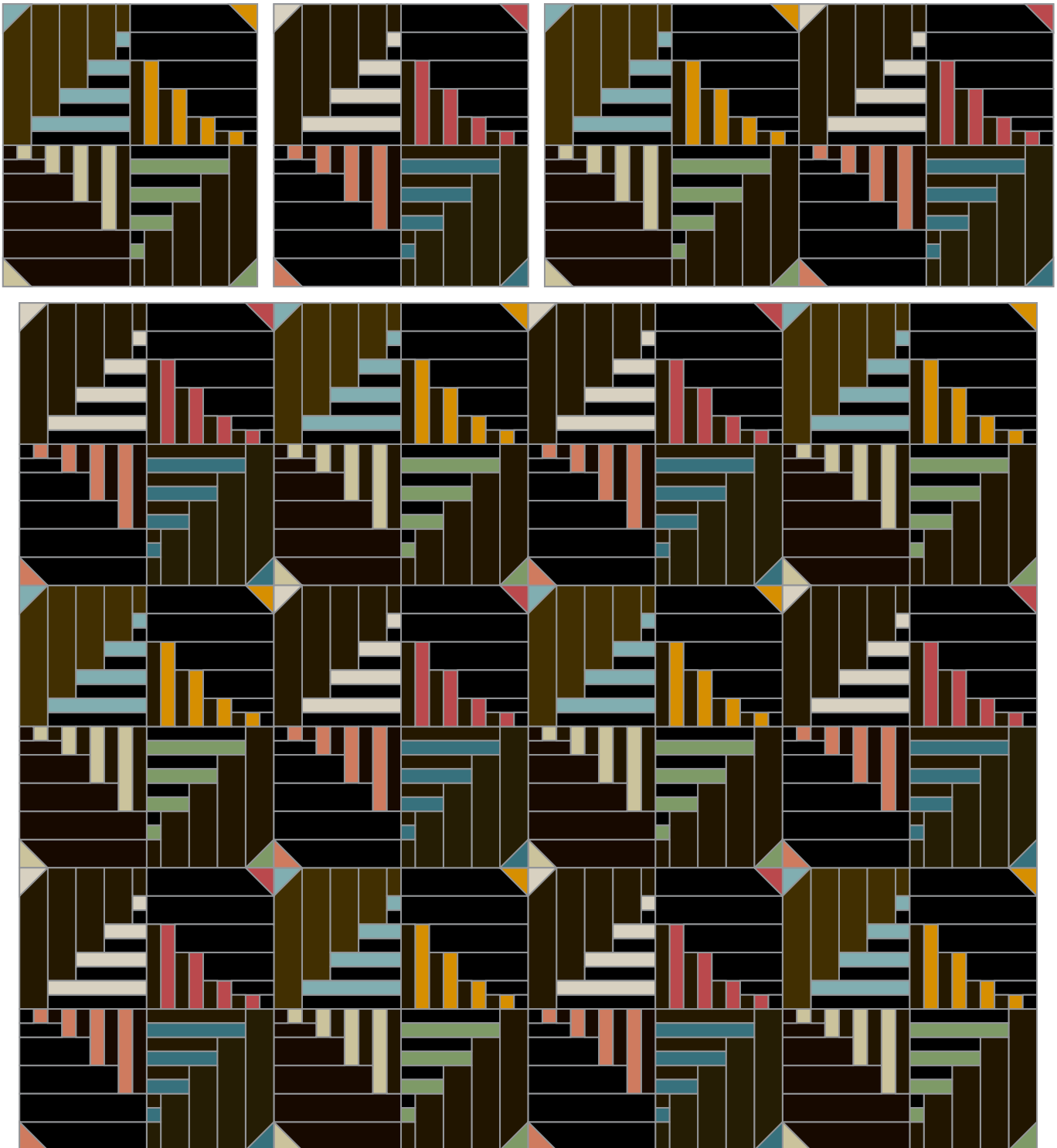
7. Layer the quilt with batting and backing and baste. Quilt in the ditch around the block patches, or quilt an overall motif. Bind to finish the quilt.



Big Block 1 – Make 8



Big Block 2 – Make 8

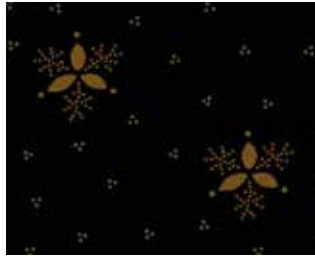


Quilt Diagram

Obsidian ANDOVER FABRICS



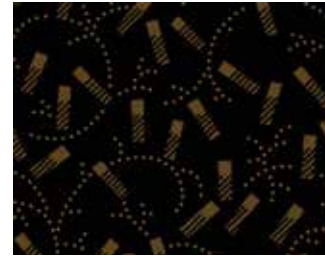
307-K



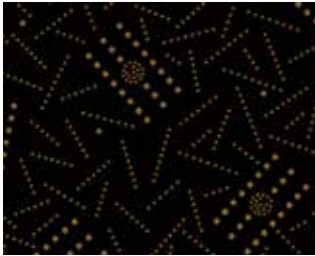
308-K



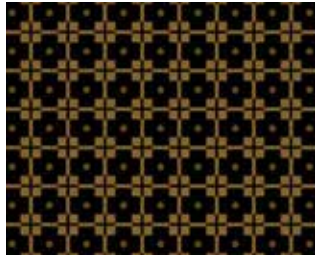
309-K



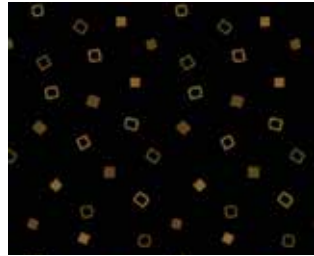
310-K



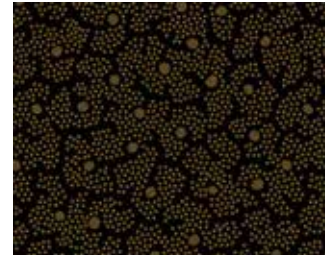
311-K



312-K



313-K



314-K



315-K



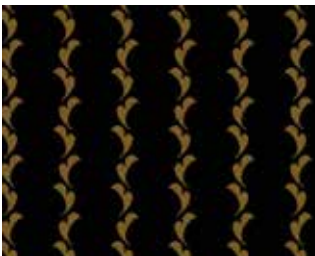
316-K



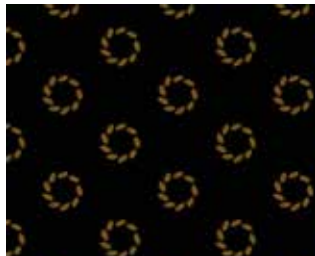
317-K



318-K



319-K



320-K



321-K



322-K

Additional fabric from Century Solids by Andover Fabrics



CS-10-BarnRose



CS-10-ButternutSquash



CS-10-Champagne



CS-10-Clay



CS-10-Faded



CS-10-Isle



CS-10-Oatmeal



CS-10-Sage

All fabrics are used in quilt pattern.

Fabrics shown are 100% of actual size.